



NUDC Polyclonal Antibody

Catalog No	YP-Ab-04046
Isotype	IgG
Reactivity	Human;Mouse;Rat
Applications	WB;IHC;IF;ELISA
Gene Name	NUDC
Protein Name	Nuclear migration protein nudC
Immunogen	The antiserum was produced against synthesized peptide derived from human NudC. AA range:282-331
Specificity	NUDC Polyclonal Antibody detects endogenous levels of NUDC protein.
Formulation	Liquid in PBS containing 50% glycerol, 0.5% BSA and 0.02% sodium azide.
Source	Polyclonal, Rabbit,IgG
Purification	The antibody was affinity-purified from rabbit antiserum by affinity-chromatography using epitope-specific immunogen.
Dilution	WB: 1/500 - 1/2000. IHC: 1/100 - 1/300. ELISA: 1/10000.. IF 1:50-200
Concentration	1 mg/ml
Purity	≥90%
Storage Stability	-20°C/1 year
Synonyms	NUDC; Nuclear migration protein nudC; Nuclear distribution protein C homolog
Observed Band	38kD
Cell Pathway	Cytoplasm, cytoskeleton. Nucleus . Cytoplasm, cytoskeleton, spindle . Midbody . In a filamentous pattern adjacent to the nucleus of migrating cerebellar granule cells. Colocalizes with tubulin and dynein and with the microtubule organizing center. Distributed throughout the cytoplasm of non-migrating cells. A small proportion is nuclear, in a punctate pattern. Localizes to the mitotic spindle in a EML4-dependent manner (PubMed:25789526). .
Tissue Specificity	Ubiquitous. Highly expressed in fetal liver, kidney, lung and brain. Highly expressed in adult pancreas, kidney, skeletal muscle, liver, lung, placenta, prostate, brain and heart.
Function	function:Plays a role in neurogenesis and neuronal migration (By similarity). Necessary for correct formation of mitotic spindles and chromosome separation during mitosis. Necessary for cytokinesis and cell proliferation.,induction:Up-regulated in actively dividing hematopoietic precursor cells. Up-regulated in cultured erythroleukemia TF-1 cells by granulocyte-macrophage colony-stimulating factor. Strongly down-regulated during maturation of erythroid precursor cells.,PTM:Reversibly phosphorylated on serine residues during the M phase of the cell cycle. Phosphorylation on Ser-274 and Ser-326 is necessary for correct formation of mitotic spindles and chromosome separation during mitosis. Phosphorylated by PLK and other



kinases.,similarity:Belongs to the nudC family.,similarity:Contains 1 CS domain.,subcellular location:In a filamentous pattern adjacent to the nucleus of migrating cerebel

Background

This gene encodes a nuclear distribution protein that plays an essential role in mitosis and cytokinesis. The encoded protein is involved in spindle formation during mitosis and in microtubule organization during cytokinesis. Pseudogenes of this gene are found on chromosome 2. [provided by RefSeq, Feb 2012],

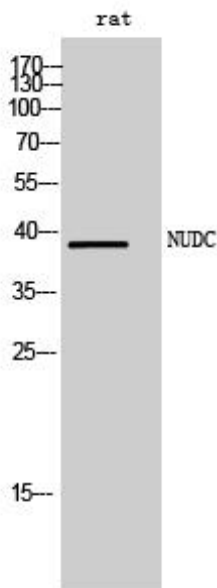
matters needing attention

Avoid repeated freezing and thawing!

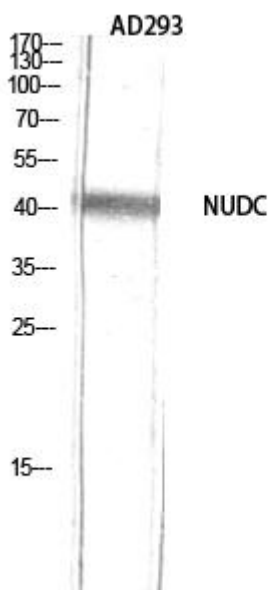
Usage suggestions

This product can be used in immunological reaction related experiments. For more information, please consult technical personnel.

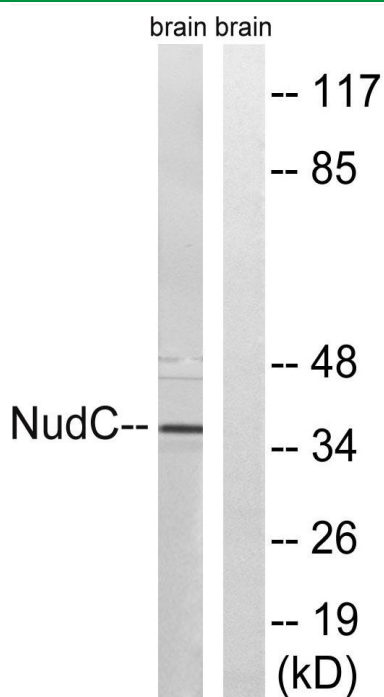
Products Images



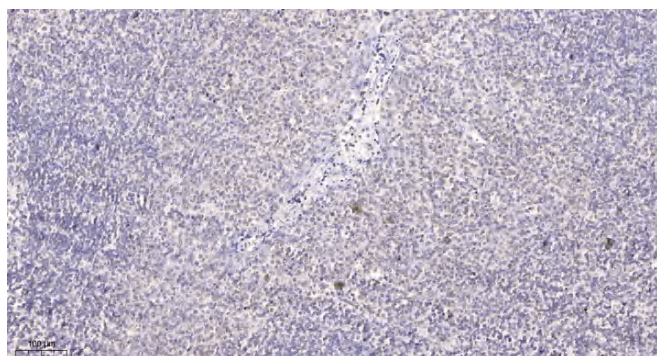
Western Blot analysis of rat cells using NUDC Polyclonal Antibody diluted at 1:2000



Western Blot analysis of AD293 using NUDC Polyclonal Antibody diluted at 1:2000



Western blot analysis of lysates from rat brain cells, using NudC Antibody. The lane on the right is blocked with the synthesized peptide.



Immunohistochemical analysis of paraffin-embedded human tonsil. 1, Antibody was diluted at 1:200(4° overnight). 2, Tris-EDTA,pH9.0 was used for antigen retrieval. 3,Secondary antibody was diluted at 1:200(room temperature, 30min).